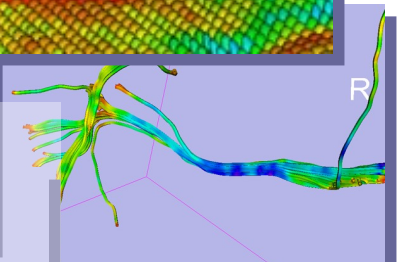
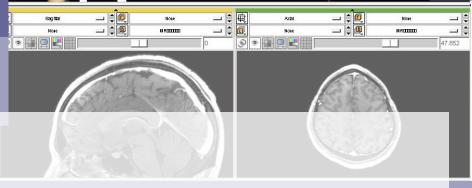
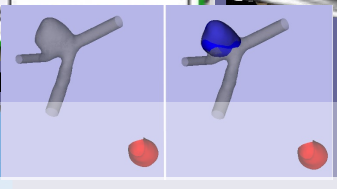
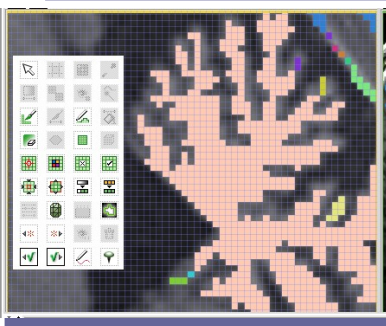
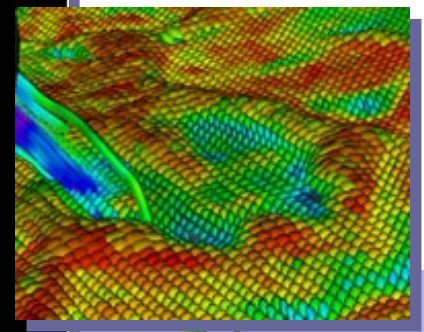
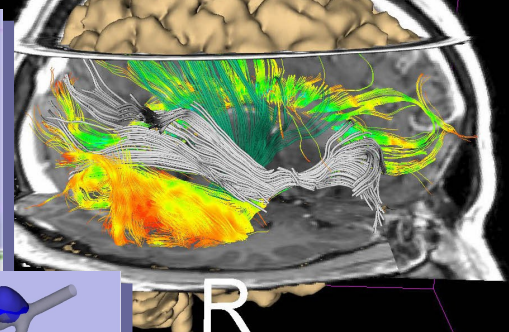


File & Administration

Choose a server:

Query for Scenes

Scene Name	Scene Description	Scene Type
Atlas_2013_01_01	Atlas_2013_01_01	Atlas
Atlas_2013_01_02	Atlas_2013_01_02	Atlas
Atlas_2013_01_03	Atlas_2013_01_03	Atlas
Atlas_2013_01_04	Atlas_2013_01_04	Atlas
Atlas_2013_01_05	Atlas_2013_01_05	Atlas
Atlas_2013_01_06	Atlas_2013_01_06	Atlas
Atlas_2013_01_07	Atlas_2013_01_07	Atlas
Atlas_2013_01_08	Atlas_2013_01_08	Atlas
Atlas_2013_01_09	Atlas_2013_01_09	Atlas
Atlas_2013_01_10	Atlas_2013_01_10	Atlas
Atlas_2013_01_11	Atlas_2013_01_11	Atlas
Atlas_2013_01_12	Atlas_2013_01_12	Atlas
Atlas_2013_01_13	Atlas_2013_01_13	Atlas
Atlas_2013_01_14	Atlas_2013_01_14	Atlas
Atlas_2013_01_15	Atlas_2013_01_15	Atlas
Atlas_2013_01_16	Atlas_2013_01_16	Atlas
Atlas_2013_01_17	Atlas_2013_01_17	Atlas
Atlas_2013_01_18	Atlas_2013_01_18	Atlas
Atlas_2013_01_19	Atlas_2013_01_19	Atlas
Atlas_2013_01_20	Atlas_2013_01_20	Atlas



Slicer 3.4

Specify Inputs: Parameters Target Images Atlas Images

Default Pre-Processing: Target Image Normalization Target-to-target Registration Atlas-to-target Registration

Segmentation: EM Segment Algorithm: Pohl et al.

Review Results: Slicer3 Slice Views Slicer3 Model Maker External Program

